

UPVC AQUASAFE PIPE FOR AGRICULTURE AND WATER TRANSPORT SYSTEM



IS 7834
CML-3800746



IS 4985
CML-3805360



EASY
TRANSPORTATION



CHEMICAL
RESISTANCE



LONGER
SERVICE LIFE



EASY
INSTALLATION



For Agriculture & Potable Water Supply



INTRODUCTION :

ASTRAL Aquasafe® pressure pipes are manufactured in accordance with IS : 4985 covering a complete range for 20 mm to 400 mm. They are available in pressure ratings of 2, 3, 6 & 10 kgf/cm² as defined in IS : 4985. ASTRAL Aquasafe® Pipes & Fittings are available in light grey colour.

The main application is in agriculture, for water supply, drip irrigation and sprinkler lines. These pipes & fittings can also be used with ASTRAL ULTRADRAIN® & ASTRAL DWV® systems for drainage & sewerage applications.

FEATURES & BENEFITS :

• Manufactured from Quality Raw Material • Easy Handling, Transportation & Installation • Non Conductive • Longevity of Life Cycle • Easy of Use • Better Flow for Optimum Yields • High Strength and Durability

FIELD OF APPLICATIONS :

• Portable water transportation for agriculture farms, tube-wells and bore-wells.
• Drain & sewer systems in residences, Resorts, Hospitals, Institutes, Commercial & industrial buildings.

AQUASAFE SELFIT PIPES

SOCKET	SIZE (mm)	PRESSURE
SS	20	10 kgf / cm ²
SS	25	10 kgf / cm ²
SS	32	10 kgf / cm ²
SS	40	6 / 10 kgf / cm ²
SS	50	6 / 10 kgf / cm ²
SS	63	4 / 6 / 10 kgf / cm ²
SS	75	4 / 6 / 10 kgf / cm ²
SS	90	2.5 / 4 / 6 / 10 kgf / cm ²
SS	110	2.5 / 4 / 6 / 10 kgf / cm ²
SS	140	2.5 / 4 / 6 / 10 kgf / cm ²
SS	160	2.5 / 4 / 6 / 10 kgf / cm ²

SOCKET	SIZE (mm)	PRESSURE
SS	180	2.5 / 4 / 6 / 10 kgf / cm ²
SS	200	2.5 / 4 / 6 / 10 kgf / cm ²
SS	225	2.5 / 4 / 6 / 10 kgf / cm ²
SS	250	2.5 / 4 / 6 / 10 kgf / cm ²
SS	315	2.5 / 4 / 6 / 10 kgf / cm ²
SS	400	2.5 / 4 / 6 / 10 kgf / cm ²
SS	20*	16 kgf / cm ²
SS	25*	16 kgf / cm ²
SS	32*	16 kgf / cm ²
SS	40*	16 kgf / cm ²
SS	50*	16 kgf / cm ²



• ALL PIPES ARE AVAILABLE IN 3/5/6 MTR LENGTH
• * - Does not conform to IS 4985

AQUASAFE ELASTOMERIC SEALING RING PIPES

SOCKET	SIZE (mm)	PRESSURE	AVAILABLE
GR	63	4 / 6 / 10 kgf / cm ²	3 / 5 / 6 mtr.
GR	75	4 / 6 / 10 kgf / cm ²	3 / 5 / 6 mtr.
GR	90	4 / 6 / 10 kgf / cm ²	3 / 5 / 6 mtr.
GR	110	4 / 6 / 10 kgf / cm ²	3 / 5 / 6 mtr.
GR	140	4 / 6 / 10 kgf / cm ²	3 / 5 / 6 mtr.
GR	160	4 / 6 / 10 kgf / cm ²	3 / 5 / 6 mtr.
GR	180	4 / 6 / 10 kgf / cm ²	3 / 5 / 6 mtr.
GR	200	4 / 6 / 10 kgf / cm ²	3 / 5 / 6 mtr.
GR	225	4 / 6 / 10 kgf / cm ²	3 / 5 / 6 mtr.
GR	250	4 / 6 / 10 kgf / cm ²	3 / 5 / 6 mtr.
GR	315	4 / 6 / 10 kgf / cm ²	3 / 5 / 6 mtr.



AQUASAFE FITTINGS

Class 2 (4kgf/cm²)

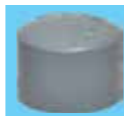
SIZE (mm)	PART NUMBER
TEE	
63	M092040106
75	M092040107
90	M092040108
110	M092040109
160	M092040112
200	M092040514



SIZE (mm)	PART NUMBER
ELBOW 90°	
63	M092040506
75	M092040507
90	M092040508
110	M092040509
160	M092040512
200	M092040514



SIZE (mm)	PART NUMBER
END CAP	
110	M092042909



AQUASAFE FITTINGS

Class 3 (6kgf/cm²)

SIZE (mm)	PART NUMBER
TEE	
40	M092060104
50	M092060105
63	M092060106
75	M092060107
90	M092060108
110	M092060109
140	M092060111
160	M092060112
200	M092060114



SIZE (mm)	PART NUMBER
REDUCER TEE	
110 x 63	M092060232
110 x 75	M092060229
160 x 75	M092060235
160 x 90	M092060272
160 x 110	M092060231



SIZE (mm)	PART NUMBER
ELBOW 45°	
40	M092062304
50	M092062305
63	M092062306



SIZE (mm)	PART NUMBER
ELBOW 90°	
40	M092060504
50	M092060505
63	M092060506
75	M092060507
90	M092060508
110	M092060509
140	M092060511
160	M092060512
200	M092060514



SIZE (mm)	PART NUMBER
MAPT	
40	M092061304
50	M092061305
63	M092061306
75	M092061307
90	M092061308
110	M092061309
140	M092061311
FAPT	
40	M092061604
50	M092061605
63	M092061606
75	M092061607
90	M092061608
110	M092061609
140	M092061611



SIZE (mm)	PART NUMBER
END CAP	
40	M092062904
50	M092062905
63	M092062906
75	M092062907
90	M092062908
110	M092062909
140	M092062911
160	M092062912
200	M092062914



SIZE (mm)	PART NUMBER
END CAP THREAD	
63	M092064506
75	M092064507
90	M092064508
110	M092064509



SIZE (mm)	PART NUMBER
DOOR CAP	
50	M112004005
63	M112004006



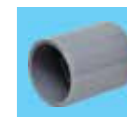
SIZE (mm)	PART NUMBER
SINGLE 'Y'	
50	M092063805
63	M092063806



SIZE (mm)	PART NUMBER
SINGLE 'Y' WITH DOOR	
50	M092063905
63	M092063906



SIZE (mm)	PART NUMBER
COUPLER	
40	M092061004
50	M092061005
63	M092061006
75	M092061007
90	M092061008
110	M092061009
140	M092061011
160	M092061012
200	M092061014



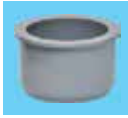
SIZE (mm)	PART NUMBER
REDUCER COUPLER	
75 x 50	M092061137
90 x 50	M092061162
90 x 63	M092061161
90 x 75	M092061130
110 x 63	M092061132
110 x 75	M092061129
110 x 90	M092061143
140 x 110	M092064060
160 x 110	M092061131
160 x 140	M092064159
200 x 160	M092064147



AQUASAFE FITTINGS

Class 3 (6kgf/cm²)

SIZE (mm)	PART NUMBER
REDUCER BUSH (Spg x Soc)	
50 x 40	M092061941
63 x 40	M092061940
63 x 50	M092061939
75 x 40	M092061938
75 x 50	M092061937
75 x 63	M092061936
90 x 50	M092061962
90 x 63	M092061961
90 x 75	M092061930
140 x 110	M092061960
160 x 110	M092061931
200 x 160	M092061947



SIZE (mm)	PART NUMBER
FLANGE ADAPTER	
63	M092063206
75	M092063207
90	M092063208
110	M092063209



SIZE (mm)	PART NUMBER
75 x 25	M092064267
75 x 32	M092064268
90 x 20	M092064269
90 x 25	M092064270
90 x 32	M092064271
110 x 20	M092064273
110 x 25	M092064274
110 x 32	M092064275
140 x 20	M092064276
140 x 25	M092064277
140 x 32	M092064278
160 x 20	M092064279
160 x 25	M092064280
160 x 32	M092064281
200 x 25	-
200 x 32	M092064286
200 x 40	M092064287
200 x 50	M092064288
200 x 63	M092064289



SIZE (mm)	PART NUMBER
FLANGE	
63	M092063506
75	M092063507
90	M092063508
110	M092063509



SIZE (mm)	PART NUMBER
TAIL PIECE	
63	M092064206
75	M092063607
90	M092063608
110	M092063609
140	M092063611
160	M092063612
200	M092063614



SIZE (mm)	PART NUMBER
SERVICE SADDLE	
63 x 20	M092064263
63 x 25	M092064264
63 x 32	M092064265
75 x 20	M092064266



Class 5 (10kgf/cm²)

SIZE (mm)	PART NUMBER
TEE	
20	M092100101
25	M092100102
32	M092100103



SIZE (mm)	PART NUMBER
MAPT	
20	M092101301
25	M092101302
32	M092101303



SIZE (mm)	PART NUMBER
REDUCER COUPLER	
25 x 20	M092101142
32 x 20	M092101157
32 x 25	M092101158



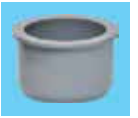
SIZE (mm)	PART NUMBER
ELBOW 90°	
20	M092100501
25	M092100502
32	M092100503



SIZE (mm)	PART NUMBER
FAPT	
20	M092101601
25	M092101602
32	M092101603



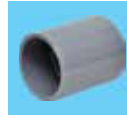
SIZE (mm)	PART NUMBER
REDUCER BUSH	
25 x 20	M092101942
32 x 20	M092101957
32 x 25	M092101958



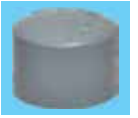
SIZE (mm)	PART NUMBER
ELBOW 45°	
20	--
25	M092102302
32	M092102303



SIZE (mm)	PART NUMBER
COUPLER	
20	M092101001
25	M092101002
32	M092101003



SIZE (mm)	PART NUMBER
END CAP	
20	M092102901
25	M092102902
32	M092102903



* Shortly Introducing

16kgf/cm²

SIZE (mm)	PART NUMBER
BRASS TEE	
25 x 1/2	M062160369



SIZE (mm)	PART NUMBER
BRASS ELBOW	
25 x 1/2	M062160769



SIZE (mm)	PART NUMBER
BRASS COUPLING	
25 x 1/2	M062160269



ADHESIVE SOLUTION

SIZE (ml)	PART NUMBER
IPS WELD-ON UPVC 100™ SOLVENT CEMENT	
237 ml	M083080101
473 ml	M083080102
946 ml	M083080103



SIZE (gm)	PART NUMBER
RUBBER LUBRICANT	
100 gm	STINS - 100
250 gm	STINS - 250
500 gm	STINS - 500



Always Use ASTRAL Aquasafe® Pipes With Fittings & For Joining Use ASTRAL uPVC Adhesive Solution

Rubber Lubricants are not Under Licence of IPS.



ASTRAL PIPES
STRONG NAHIN, ASTRAL STRONG!!
ASTRAL POLY TECHNIK LIMITED

REGISTERED & CORPORATE OFFICE:

207/1, Astral House, B/h. Rajpath Club,
Off. S.G. Highway, Ahmedabad-380 059,
Gujarat, India.

Phone : +91 79 6621 2000

Fax : +91 79 6621 2121

E-mail : info@astralpipes.com

Website : www.astralpipes.com

BRANCH OFFICES:

Bengaluru : Telefax : (080) 2661 7236

Chennai : Phone : (044) 4350 6384

Hyderabad : Telefax : (040) 2790 0023

Jaipur : Phone : (0141) 2974 322

Kochi : Phone : (0484) 3328 156

Lucknow : Phone : (0522) 2728 844

Mumbai : Phone : (022) 2838 9744

New Delhi : Phone : (011) 2616 8156

Pune : Phone : (020) 6521 4455

E-mail : bengaluru@astralpipes.com

E-mail : chennai@astralpipes.com

E-mail : hyderabad@astralpipes.com

E-mail : jaipur@astralpipes.com

E-mail : kochi@astralpipes.com

E-mail : lucknow@astralpipes.com

E-mail : mumbai@astralpipes.com

E-mail : delhi@astralpipes.com

E-mail : pune@astralpipes.com



ASTRAL TOLL FREE
1800 233 7957

Please get in touch with us
between 10 a.m. to 6 p.m.



Authorised Distributor :

